

# Preliminary Ring Layouts for Study 2

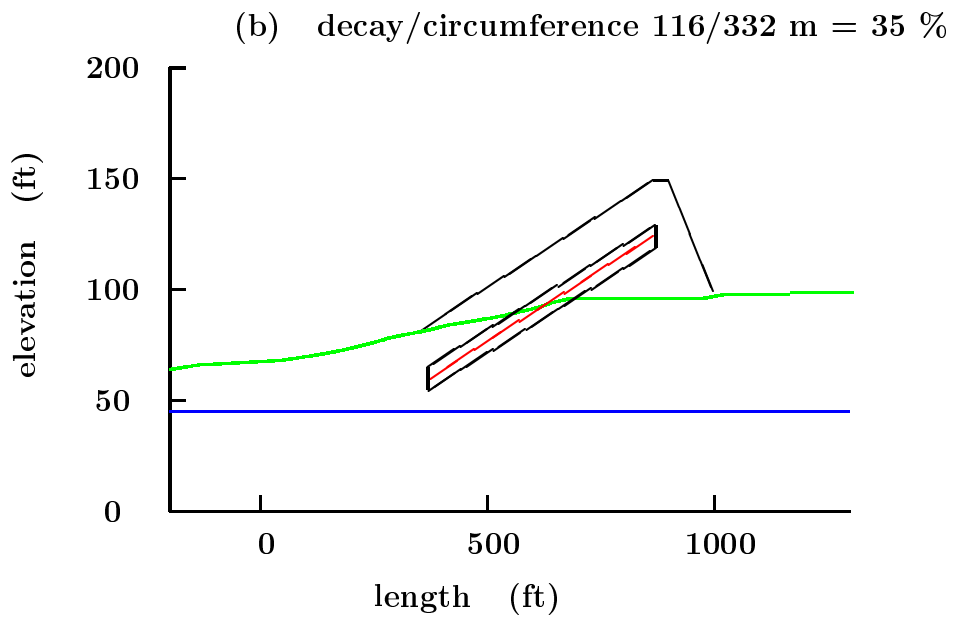
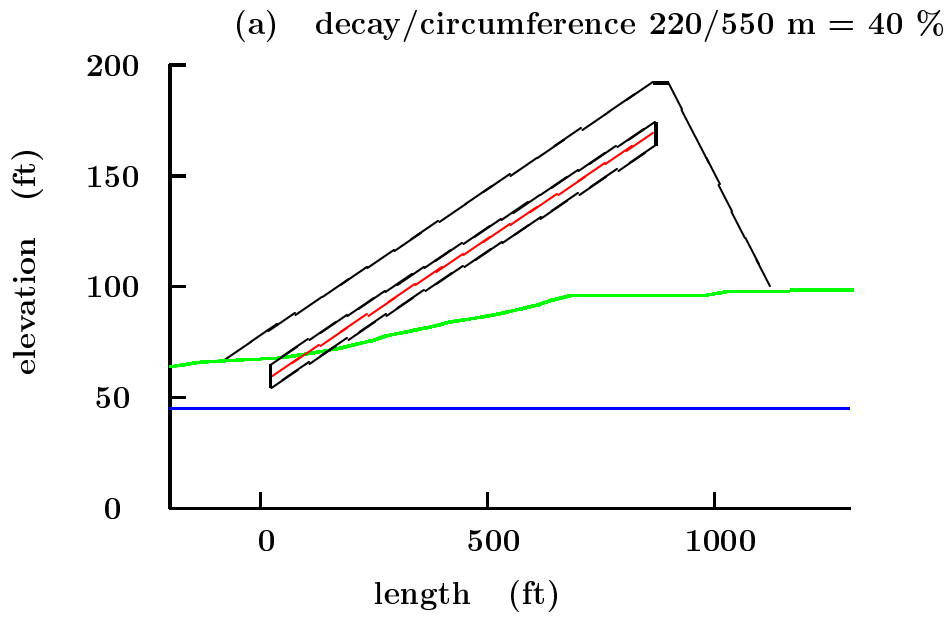
J. Gallardo, S. Ozaki, R. Palmer,  
B. Parker, D. Trbojevic

## Baseline Assumptions

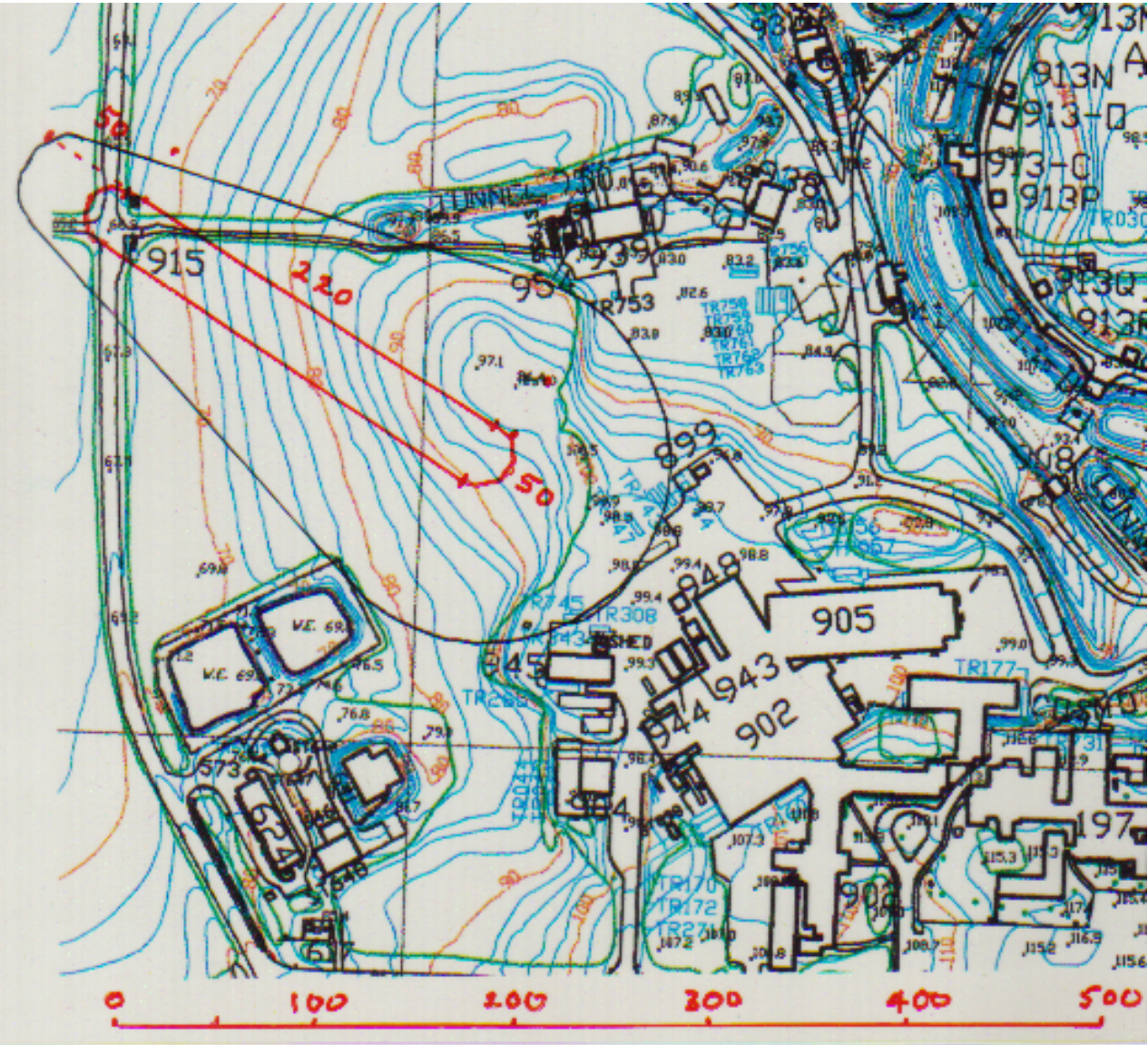
To Soudan	1713	km
Dip angle	7.73	deg
Dip angle	.134	rad
Bearing	303.33	deg
Tunnel diam	10	ft
Cover	20	ft
Burm angle	27	deg
Arc Rad	16	m
Water table	45	ft
Beam dist to table	50	m
Decay len / circ	40	%

**vs. decay len / circ**

decay/circ %	circ. m	decay m	len m	dh m	hill m	vol yrd <sup>3</sup>
<b>40</b>	<b>550</b>	<b>220</b>	<b>252</b>	<b>34</b>	<b>30</b>	<b>250k</b>
35	332	116	148	20	15	50k
30	250	75	107	14	9	15k



# 40 % Baseline Case





## If BNL to Carlsbad

To Carlsbad	2903	km
Dip angle	13.1	deg
Dip angle	.229	rad
Bearing	267.45	deg

## vs. decay len / circ

decay/circ %	circ. m	decay m	len m	dh m	hill m	vol yrd <sup>3</sup>
35	332	116	148	34	30	225k
26	210	55	87	20	15	45k