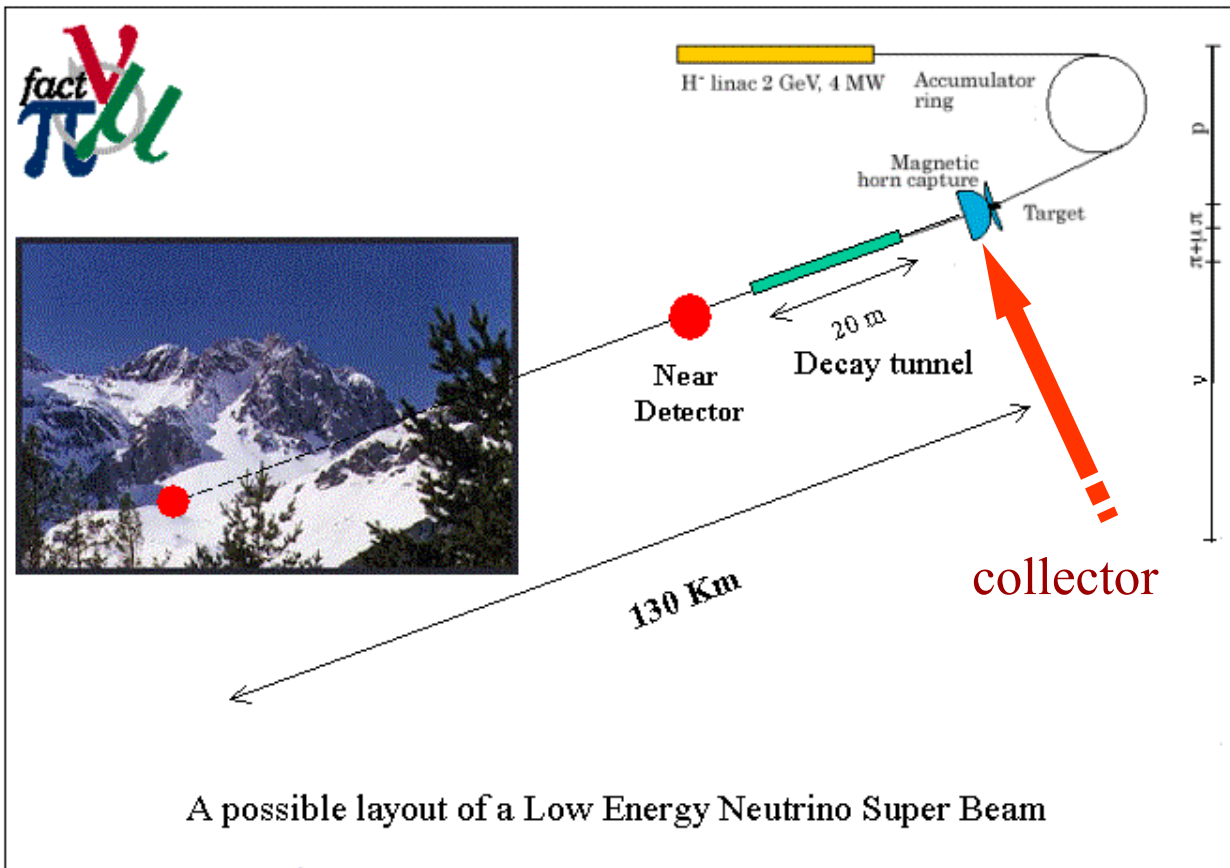




---

# Contribution to the SB/NF collector project (Francis Osswald, IReS-Strasbourg)

# physics baseline



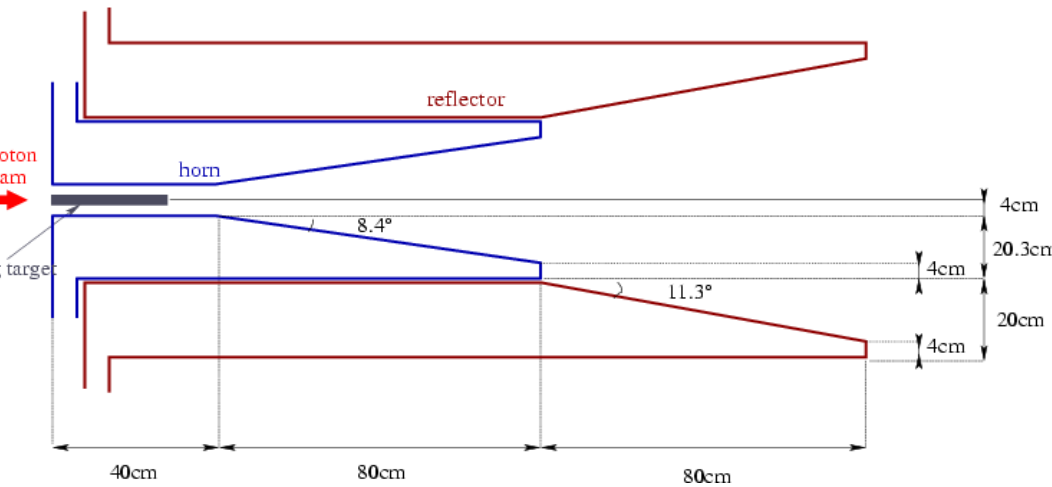
- long term plan

see base line :  
 S. Gilardoni, NuFact  
 Note 141, July 2004  
 Campagne et al.,  
 optimization for SB

# CERN horn prototype



# a few details ...





# IReS-Strasbourg joint BENE collector group since Oct. 2005

## Goals:

- transfer CERN technology,
- install a local test bench,
- acquire a new power supply,
- realize performance and ageing tests,
- develop simulation tools and provide comparison with the experiment
- integration of the target (solid or liquid)



## work in progress

- power supply design (find companies, collaborators, financing),
- set up the infrastructure and the local team,
- perform qualification tests of the simulation tool.



# connexions

- BENE collaboration (WP4)
- CERN/AB
- ISS
- IN2P3
- European laboratories and EuroMagNet
- software-hardware suppliers